

How to: Convert Census boundary files from .e00 format to .shp format file. (ArcMap 9.2)

Download, decompress, and save Census boundary files

Census boundary files for the Censuses from 2001 back to 1981 are available for downloading from the Queen's University Library MADGIC web page. They are compressed (or zipped) ArcInfo Interchange files with the file extension .e00. They need to be decompressed (unzipped) and converted to a coverage or a shape file for use in ArcMap 9.x..

Read the following first before saving ...

In general when working with ESRI software:

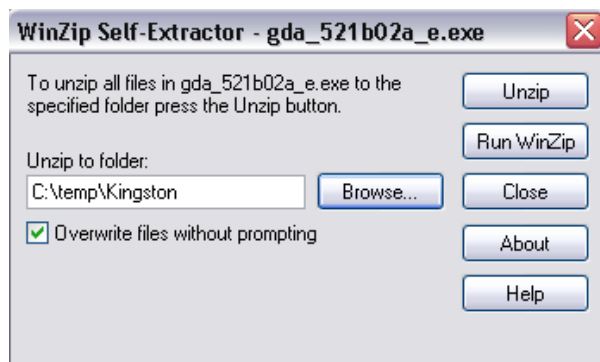
- **Files should never be placed in a directory which has a space in the name, or a space anywhere in the path to the directory.**
- **File names cannot be over 13 characters long.**
- **File names cannot contain special characters; for example, #, @, %**
- **Underscores are permitted.**

Click on the file name and this dialog box, or one similar, should open.



Be sure that you save the file to a place on your computer that has a path name with **no** spaces or special characters. (c:\tempKingston is a good choice; c:\My Documents and Settings\Desktop\Kingston is not, because of the spaces △.)

Open the folder and double click on the file name (in this case **gda_521b02a_e.exe**) in order to decompress the file. (This procedure will vary depending on your software installation and preferences.)



Name	Size	Type	Date Modified
gda_521b02a_e.e00	1,283 KB	E00 File	8/13/2002 9:34 AM
gda_521b02a_e.exe	456 KB	Application	3/2/2006 9:20 AM

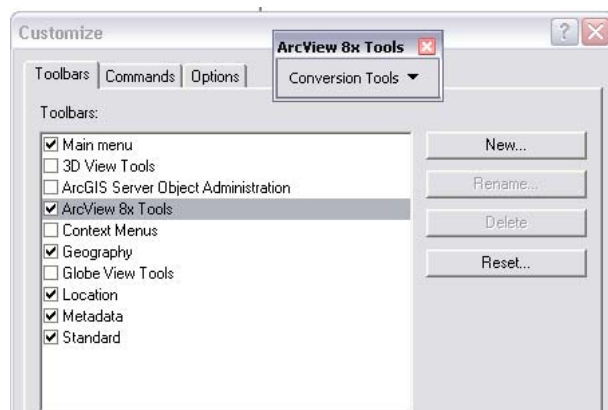
The unzipped file has the extension **.e00** (ArcInfo Export).

NOTE: Many of the Statistics Canada boundary file names have too many characters in them for the ArcCatalog tool to handle. For instance, *gda_521b02a_e.e00* has over 13 characters in it. You will need to change the name to something shorter (and more descriptive) before converting the file.

Convert to shapefile format (in ArcMap9.2)

Open ArcCatalog --  .

Select **Tools ... Customize ... ArcView 8x tools.**

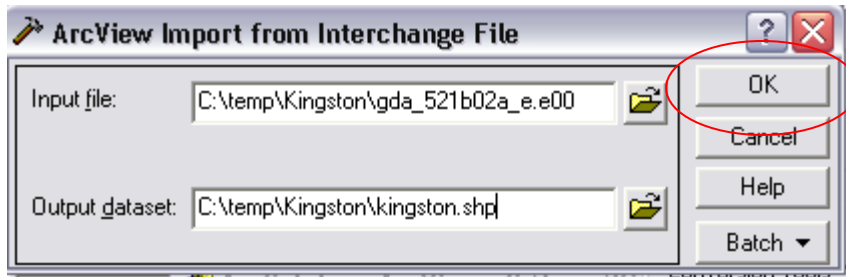


The Conversion Tools utility will appear.



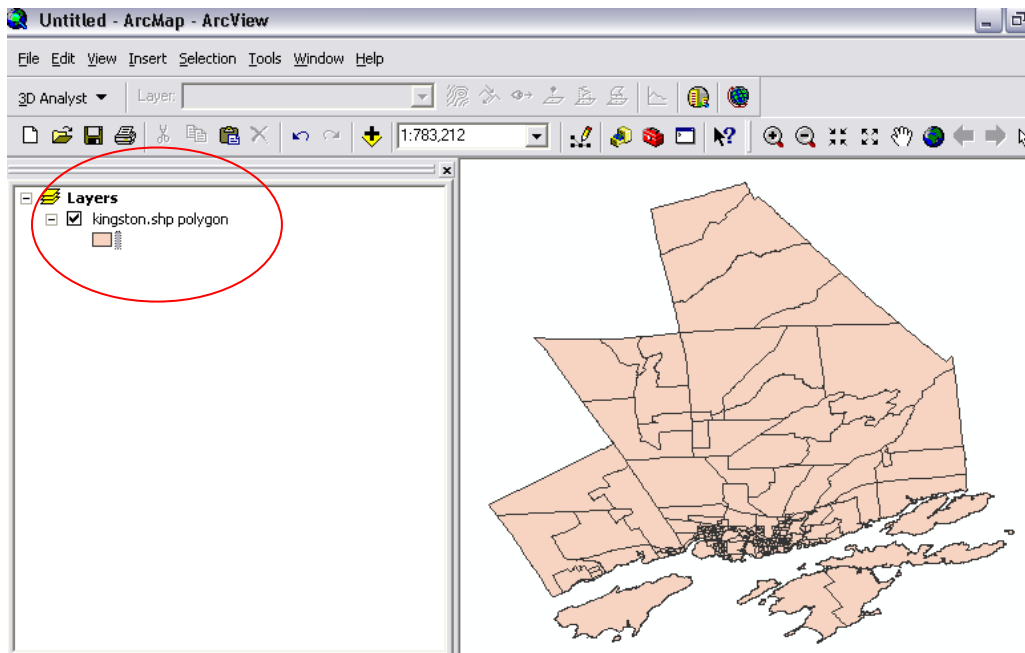
Open it and select **Import from Interchange File**.

In the dialog box, navigate to the directory where the uncompressed .e00 file is. Double click on the file to enter its name in the **Input file** box. In the **Output dataset** box, define to path and file name for the new file.. Remember the ESRI file naming conventions from above.

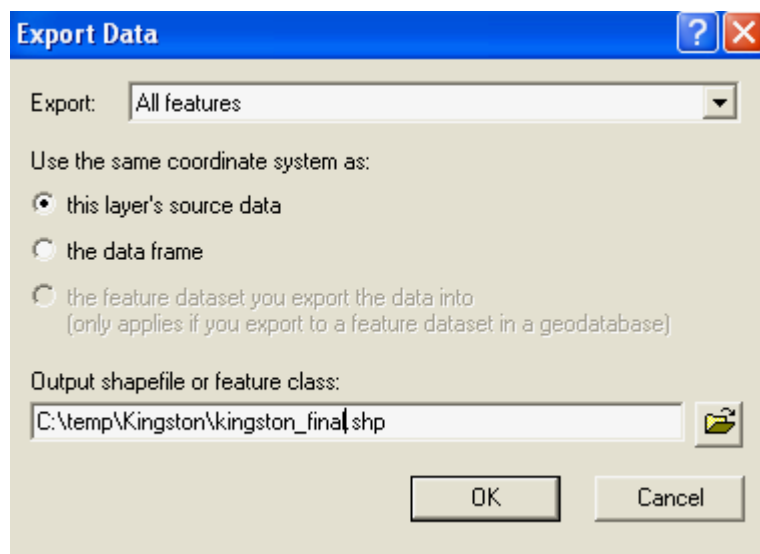


Export data to create a simple shapefile

In ArcMap, add the coverage file  kingston.shp



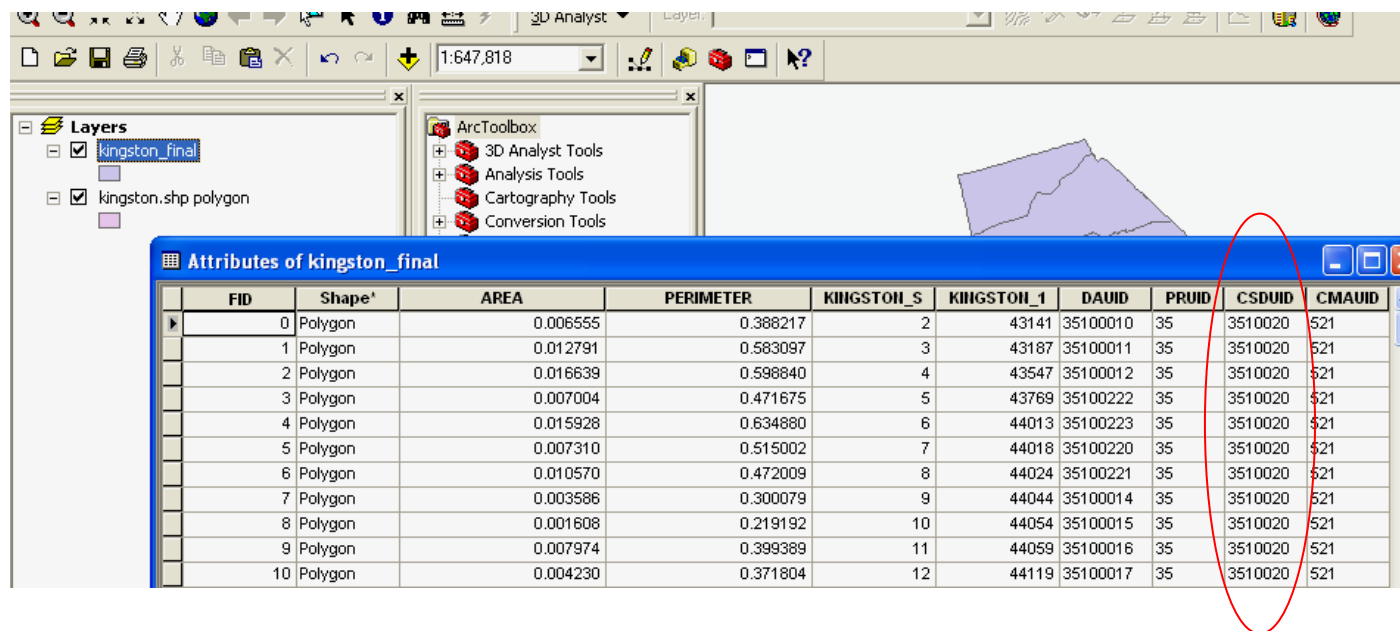
Convert the coverage file to a simple shapefile by right clicking on the file (here, *Kingston.shp polygon*) in the Table of Contents. Select **Data ... Export Data**. In the dialog box, fill in the choices as illustrated below. Choose a meaningful name and path for the Output shapefile (here, *Kingston_final.shp*).



When prompted to add the exported data as a layer, click Yes.

Prepare to join tabular data in ArcMap –

Open the Attribute Table for *Kingston_final* and notice the DAUID column. These are the unique identifiers for each Dissemination Area that can be used to join this example of Census Geography data to Census Attribute data.



Next -- Continue with the tutorial handout titled **Working with Census data in ArcMap9.x ...**