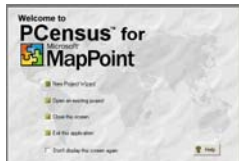


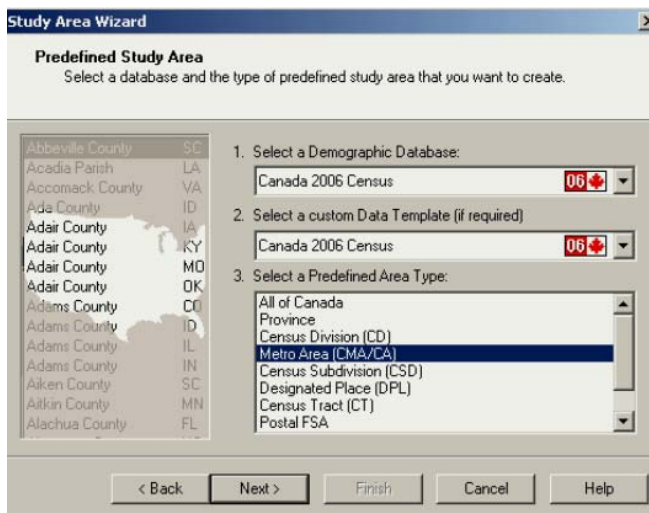
Extract census data in PCensus to use in ArcMap 9.x

Example: Kingston, Ont -- CMA 2006 Dissemination Areas



Go to PCensus (with or without MapPoint) ... select New Project Wizard.

For this exercise, select a Predefined Area



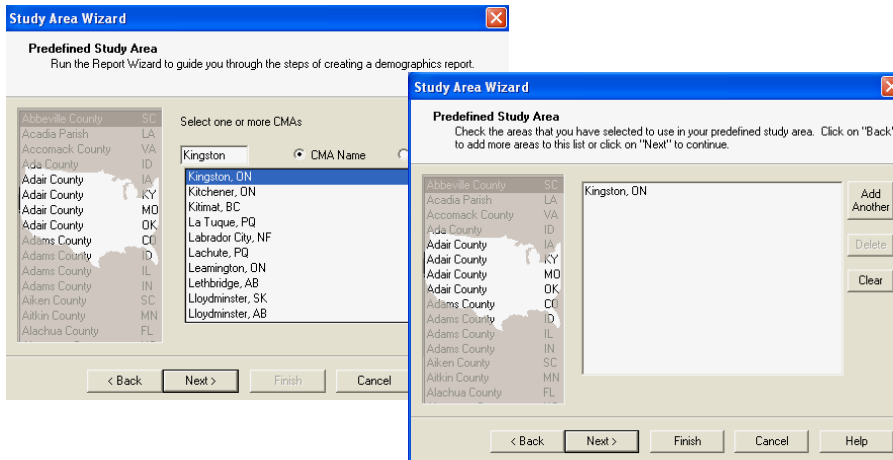
Select *Canada 2006 Census* as the Demographic Database

Select the *Canada 2006 Census Data Template*

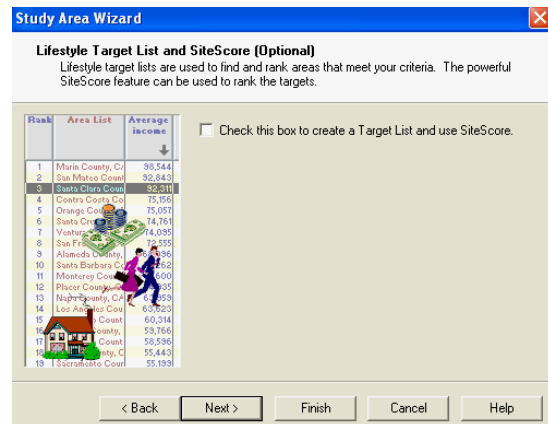
Choose *Metro Area (CMA / CA)* as the first level of geography. (You will be able to select the smaller DAs later in the process.)

Press Next.

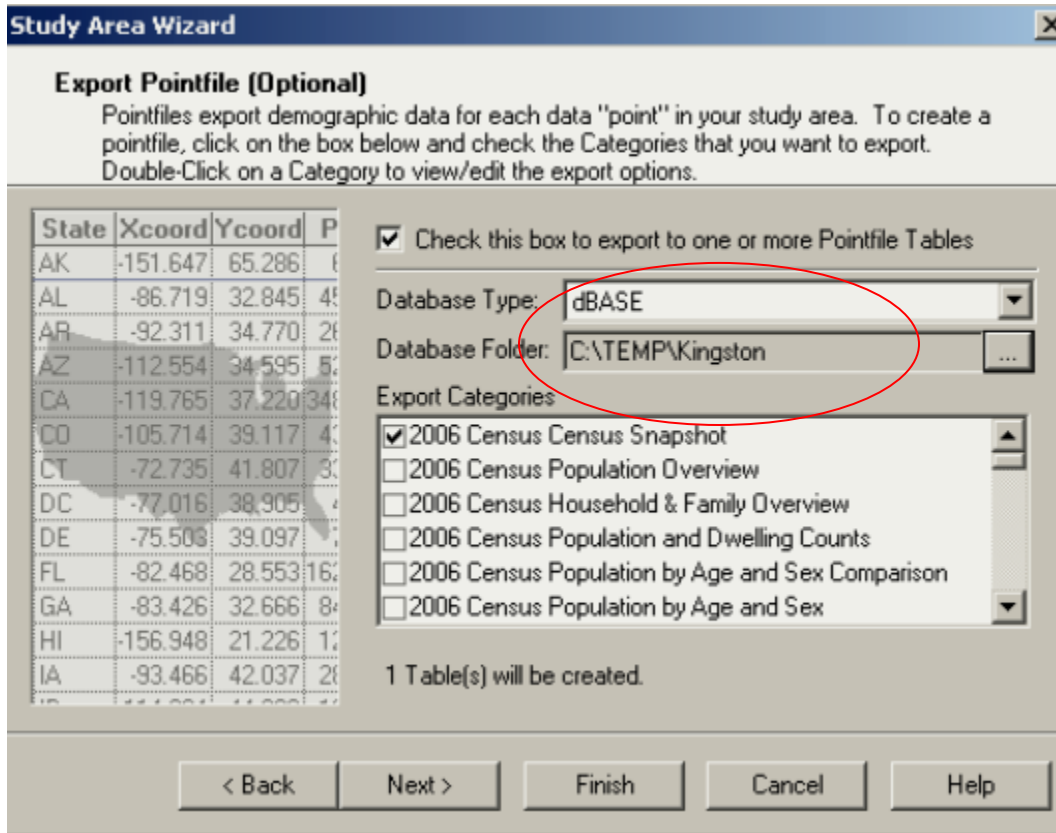
Navigate to Kingston. Click Next and Next.



Pass through the **Thematic** and **Lifestyle** options.

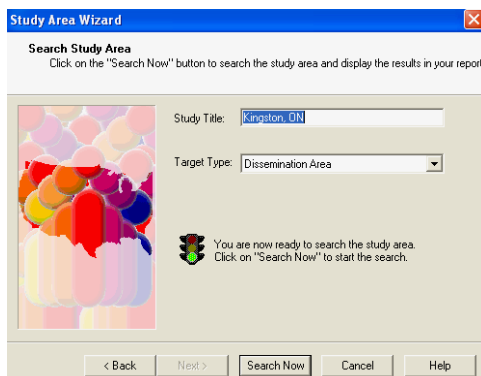


Choose the **Export Pointfile** option and click Next.



Select Database Type **dBASE** because it works well with ArcMap.

Be very careful to select where the downloaded data will go. In this example, the data will go to **c:\temp\Kingston**. (The default location is buried in the PCensus program directory.) Then select as many Export Categories as you wish. (Further into this exercise, we will work with **Census Snapshot**, **2006 Household Income**, and **Ethnic Origin Summary**.)



In the Search Study Area dialogue box, choose Target Type as Dissemination Area in order to extract data for the entire Kingston CMA at this level of Census Geography.

Click **Search Now**.

A PCensus report pops up when the searching is completed. Another copy of the report will be in the destination file for the data – for instance, in **c:\temp\Kingston**. This report describes the exported data and is especially useful for deciphering obscure abbreviations. The report is automatically named **Export Log File.txt** but you can rename it.

```

Export Log File.txt - Notepad
File Edit Format View Help
Study Area Export Information

This file contains a description of data exported from PCensus for MapPoint on Tuesday, September 02, 2008 09:24

Study Area
Study Title: Kingston, ON
Area Type: Metro Area (CMA/CA)
Geographic Bounds: (-76.8368, 44.1271) to (-76.2697, 44.6622) 28.1 mi by 37.0 mi

Source Database
Name: Canada 2006 Census
Source: Canada 2006 Census
Search Summary Level: Dissemination Area (DA)
# of Data Points: 253

Exported Data
Database Type: dBASE
Data Folder: C:\TEMP

Data Template: Canada 2006 Census
# of Data Categories: 1
# of Created Tables: 1

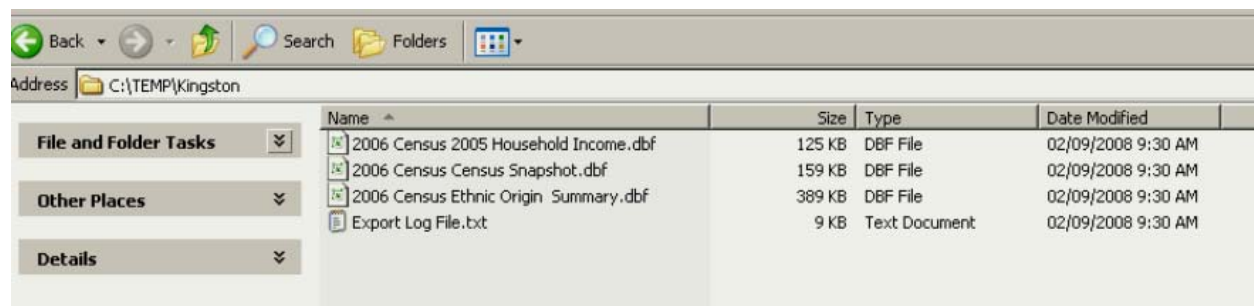
Data Category List:
1. 2006 Census Census Snapshot

Table List:
1. 2006 Census Census Snapshot.dbf

2006 Census Census Snapshot.dbf
Data Category: 2006 Census Census Snapshot
L AREA_NAME
? CODE
? XCOORD
? YCOORD
? TOTPOP Total Population
? MALES Males
? FEMALES Females
? POPAGE0004 0 to 4 years
? POPAGE0519 5 to 19 years
L0 POPAGE2024 20 to 24 years
L1 POPAGE2534 25 to 34 years
L2 POPAGE3544 35 to 44 years
L3 POPAGE4554 45 to 54 years
L4 POPAGE5564 55 to 64 years

```

In the destination directory, you will see the Export Log File and database files for each Export Category in the file type selected earlier.



At this point, the Census data is ready to import into ArcMap and join with Dissemination Area shapefiles. Move on to the tutorial ***Join Census geography files with Census attribute data to create thematic maps.***